



NEWINGTON  
LONDON

4 Bedrooms

Apartment

Located in London

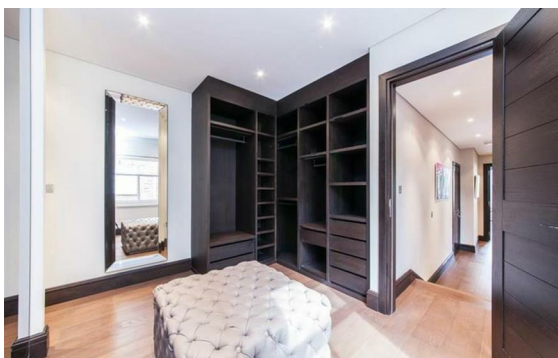
£1,345 Per Month



info@newingtonstates.com

<http://www.newingtonstates.com>

020 7724 2233



# NEWINGTON LONDON

60 Upper Montagu Street

London

W1H 1SN

020 7724 2233

[info@newingtonestates.com](mailto:info@newingtonestates.com)

Newington Estates are delighted to present you this stunning four bedroom apartment offering fantastic space and high quality fittings. This spacious property benefits from 24 hour portage & communal hot water & heating. The property comprises master bedroom with en suite bathroom, three further bedrooms, a further modern bathroom, a double reception room with an open plan a kitchen/dining room. Further benefits include wooden floors throughout the property.

St John's Wood Court is located opposite the famous Lords Cricket Ground and within close proximity of St John's Wood High Street and St John's Wood Underground Station (Jubilee Line) as well as, the open spaces of Regent's Park. EPC RATING: C

## Energy Efficiency Rating:

Agents Note: Whilst every care has been taken to prepare these particulars, they are for guidance purposes only. All measurements are approximate and are for general guidance purposes only and whilst every care has been taken to ensure their accuracy, they should not be relied upon and potential buyers/tenants are advised to recheck the measurements.

<http://www.newingtonestates.com>